



SmartWasher®
BIOREMEDIATING parts washing system




SW-28 SUPERSINK PARTS WASHER

 **D3F0 NUMBER**

 **LEGACY NUMBER**




 Sink diagram

 Base diagram

100485 I
14144



Solutions to Keep You Moving™

 • 800-556-5074 • crcindustries.com/smartwasher

CRC Industries, Inc. is a global leader in the production of specialty products and formulations for maintenance, repair and operational professionals and do-it-yourselfers serving the automotive, industrial, electrical, marine, heavy truck, hardware and aviation markets. CRC trademarked brands include: CRC®, Brakleen®, Evapo-Rust®, K&W®, Sta-Lube®, SmartWasher®, Marykate®, and Weld-Aid®

©2023 CRC Industries, Inc.

 **YouTube**
SCAN HERE FOR MORE INFO:



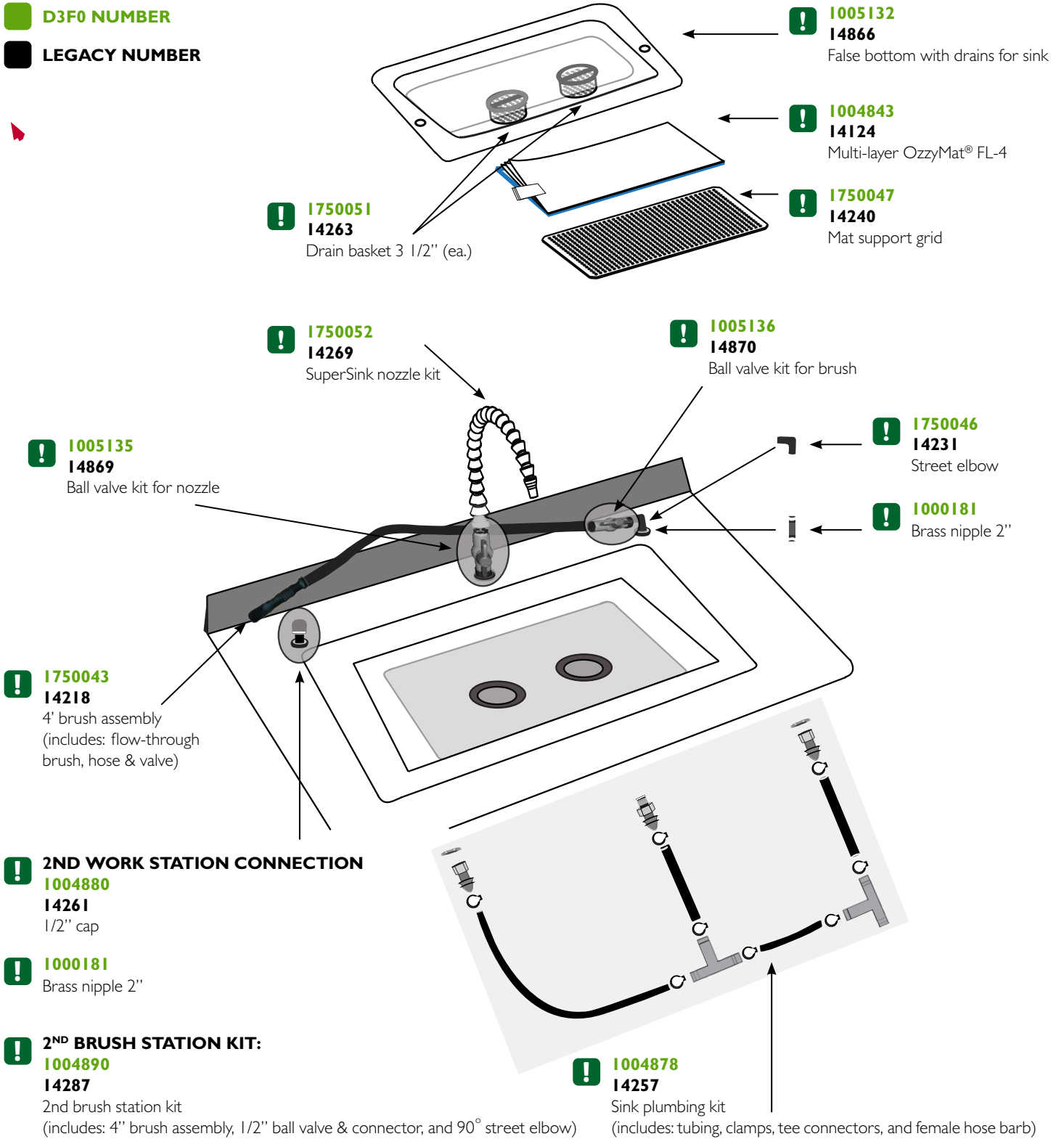
SCAN ME



SW-28 SUPERSINK PARTS WASHER SINK DIAGRAM

D3F0 NUMBER

LEGACY NUMBER



Solutions to Keep You Moving™

f t y o i n • 800-556-5074 • crcindustries.com/smartwasher

CRC Industries, Inc. is a global leader in the production of specialty products and formulations for maintenance, repair and operational professionals and do-it-yourselfers serving the automotive, industrial, electrical, marine, heavy truck, hardware and aviation markets. CRC trademarked brands include: CRC®, Brakleen®, Evapo-Rust®, K&W®, Sta-Lube®, SmartWasher®, Marykate®, and Weld-Aid®

©2023 CRC Industries, Inc.

YouTube
SCAN HERE FOR
MORE INFO:

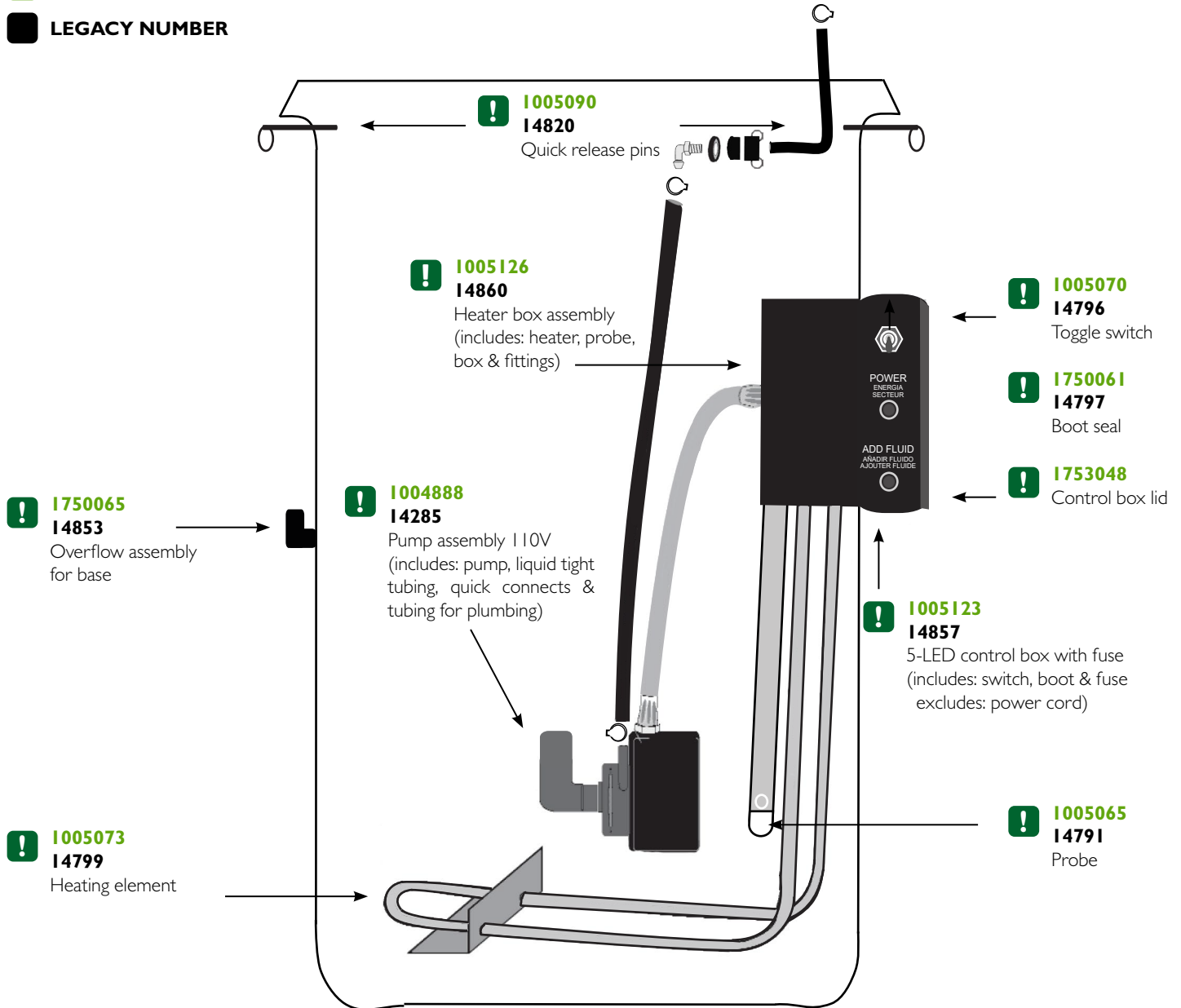


SCAN ME



SW-28 SUPERSINK PARTS WASHER BASE DIAGRAM

- ! **D3F0 NUMBER**
- ! **LEGACY NUMBER**



ADDITIONAL PARTS FOR SW-28 MODEL:

- 1750058**
14790
Bulkhead fitting
- 1750060**
14795
Pump fuse
- 1750059**
14794
Heater fuse
- 1750066**
14863
Power cord kit 12ft
(includes: cord & connectors)

